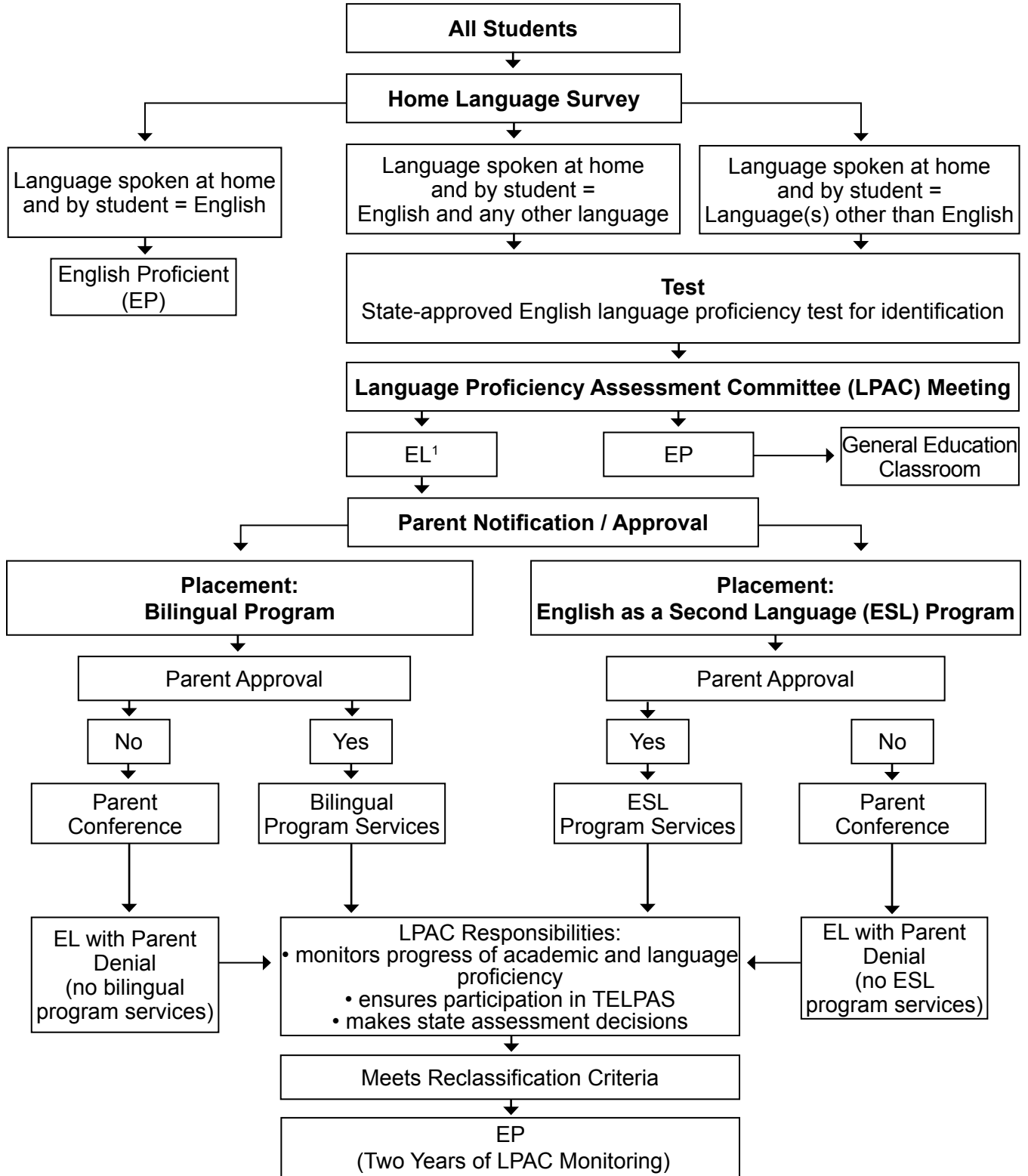


English Learner (EL) Identification/Reclassification Flowchart



¹Criteria for EL identification:

Pre-K – 1st: State-approved English language proficiency test (listening and speaking) below English proficient level = EL

2nd – 12th: State-approved English language proficiency test (listening, speaking, reading, and writing) below English proficient level = EL

The terms Limited English Proficient (LEP) and English learner (EL) are used interchangeably. The term LEP is still used for data collection in the Public Education Information Management Systems (PEIMS).